



EWAC MEDICAL

WE GET YOU MOVING



Modular Pool

Designed for Movement, Built for Well-being



Welcome

“We get you moving,” isn’t just a slogan—it’s a lifeline to those like Emily, whose world shrunk dramatically after an injury left her doubting if she’d ever dance at her daughter’s wedding. EWAC’s aquatic therapy equipment, installed at the local rehabilitation center, where water and technology blend in harmony. For Emily, the pool isn’t just a facility; it’s where miracles begin. Under the gentle guidance of her therapist, she finds herself surrounded by water, feeling lighter, freer, and more capable with each session. The fear and doubt that once clouded her mind start to dissipate, replaced by hope and determination.

Aligned with our mission to enhance the global quality of life, our slogan signifies more than just physical movement. It represents our commitment to rejuvenating lives, empowering individuals, revitalizing businesses, and, on a grander scale, propelling nations forward. By getting people moving, we’re not only facilitating physical mobility but also driving progress and prosperity. We achieve this through our dedication to delivering the pinnacle of innovation and quality in our field, tailored to meet the specific needs of diverse cultures globally. This is how we fulfill our promise: “We get you moving,” embodies our commitment to movement, improvement, and advancement for individuals, businesses, and nations alike.

Eric Legdeur - CEO

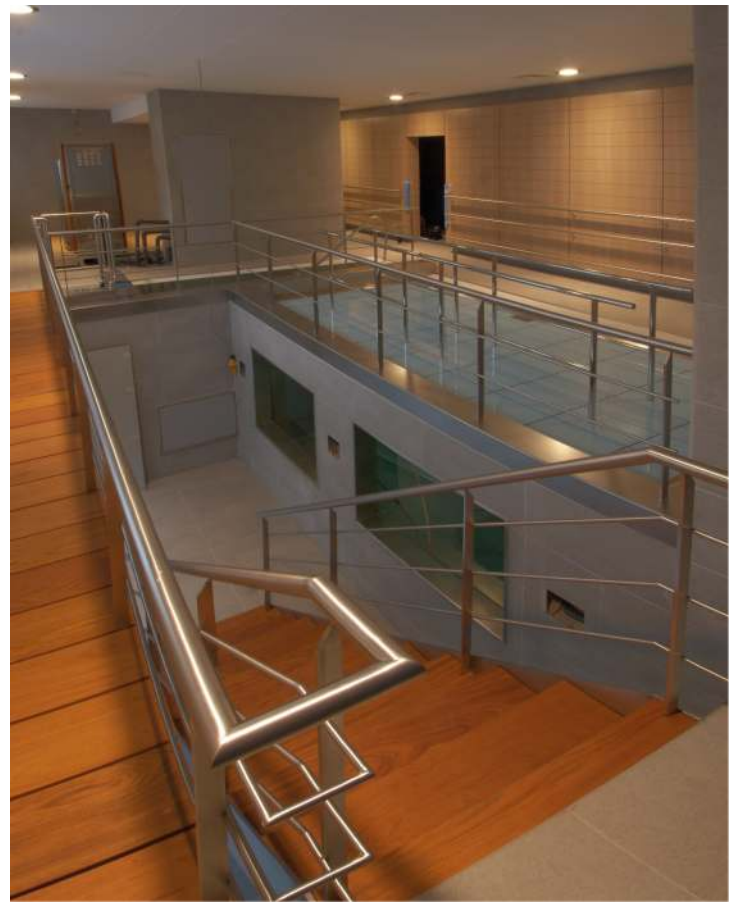
A handwritten signature in black ink that reads "ERIC" in a cursive, slightly slanted font. The signature is underlined with a single horizontal stroke.

EWACMEDICAL.COM

Introduction

Modular Pool

The EWAC Medical Modular Pool transforms water into a therapeutic environment for rehabilitation, recovery, and safe exercise. Fully customizable in size, layout, and depth, it adapts seamlessly to diverse clinical settings, from early mobility training to extensive aquatic programs. With stainless steel construction, advanced water treatment options, and flexible configurations, the Modular Pool delivers long-lasting quality, accessible movement, and confidence in both patient outcomes and therapist practice.



Freedom to Move. Space to Grow.

Step into a pool designed for people. The Modular Pool adapts to rehabilitation and training goals, restoring mobility, balance, and endurance in a safe aquatic setting that evolves with every stage of progress.

Peng MS, et al. (2022). "Efficacy of Therapeutic Aquatic Exercise vs Physical Therapy Modalities for Patients With Chronic Low Back Pain: A Randomized Clinical Trial." JAMA Network Open, 5(1): e2142067.

Amedoro A, et al. (2020). "The effect of aquatic physical therapy on patients with Multiple Sclerosis: a systematic review and meta-analysis." Complementary Therapies in Clinical Practice, 39:101155.

Patil (2024). "Aquatic Therapy Benefits and Applications in Physiotherapy" for a broad review of benefits across populations.

Believe – Movement Restores Confidence

Patient Experience

At EWAC Medical, we believe water restores confidence where mobility has been lost. By reducing weight-bearing stress, it enables movements that may be painful or unsafe on land. Shallow depths allow secure stepping, balance training, and the relearning of gait in a safe environment. Mid-depths offer resistance to rebuild strength and endurance while maintaining buoyancy. Deeper water almost eliminates joint stress, providing opportunities for cardiovascular training, range-of-motion exercises, and pain relief. For patients, this means accessible and motivating activity at every stage of progress. The environment itself reinforces trust: smooth stainless steel surfaces are non-porous and easy to disinfect, unlike concrete pools that harbor biofilm, ensuring safer, more hygienic treatment even under high turnover. With non-slip flooring and safe access, the Modular Pool allows patients to feel supported, independent, and engaged at every stage of their recovery journey.



Therapist Perspective

For therapists, the Modular Pool is more than a basin of water—it is a versatile tool that supports efficient, safe, and evidence-based practice. Ergonomic poolside layouts minimize strain during supervision, while optional handrails and safe access solutions allow staff to focus on treatment rather than logistics. Integrated observation windows and underwater camera systems provide clear views of gait, posture, and coordination, enabling real-time analysis and documentation. This direct feedback enhances the therapist's ability to adjust exercises instantly and track patient progress with objective data. By combining versatility, safety, and professional ergonomics, the Modular Pool empowers therapists to deliver consistent, high-quality aquatic therapy that is both effective for patients and sustainable for daily clinical use.

A System that Fits You – and Evolves with You

Designed for Simple Installation and Upkeep

Design & Construction

The Modular Pool is engineered from marine-grade stainless steel (AISI 316L), known for its unmatched durability, hygiene, and resistance to corrosion. Unlike concrete pools, stainless steel does not crack or leak, eliminating costly repairs and interruptions in service. Smooth, non-porous surfaces simplify cleaning and reduce the risk of bacterial growth, ensuring consistently high hygiene standards. Certified sealing technology ensures long-term watertightness, while exterior cladding options in aluminium/PE panels give free-standing models a durable and aesthetic finish.

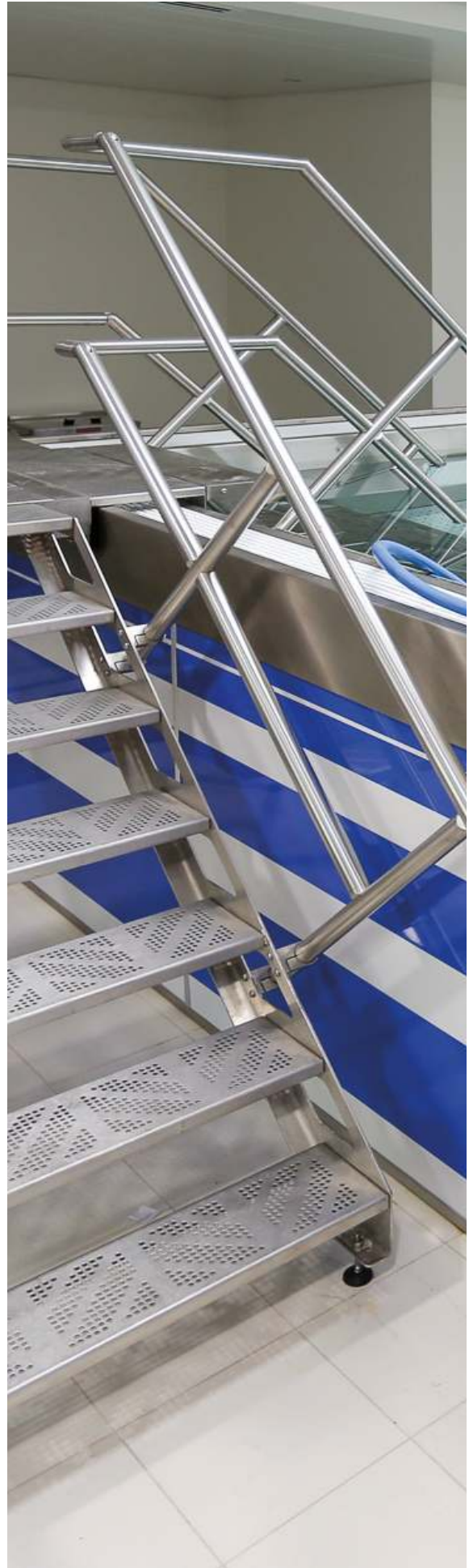
Transportability is integral to the design: modular sections are engineered to fit through a standard doorway and assembled on-site, removing the need for large construction access or structural modifications. This makes the Modular Pool particularly valuable in healthcare environments where space is restricted and installation must cause minimal disruption. The system is designed not only for durability but also for flexibility—pools can be resized, relocated, or expanded as institutional needs change. Together, these design principles guarantee a future-proof solution that grows with healthcare facilities over decades of use.



Flexibility & Integration

Every institution has different requirements, and the Modular Pool is designed to meet them. Dimensions, shapes, and depths are fully configurable, and pools can be built with single or multiple depth zones. A movable floor can also be added, providing fully adjustable depths up to 170 cm, meaning one pool can serve multiple user groups without requiring oversized or sloped basins. This flexibility enables facilities to achieve more therapy in less space, reducing construction costs and increasing long-term efficiency.

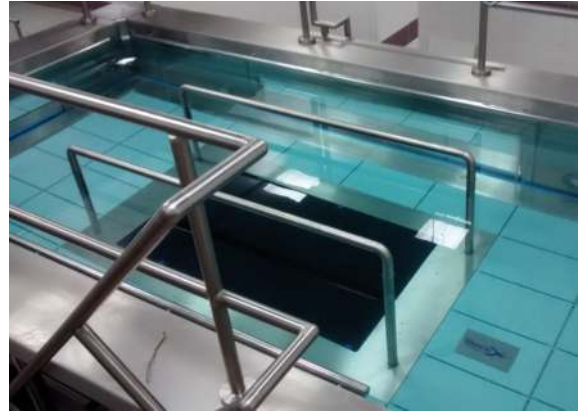
Integration with existing infrastructure is seamless. Pools can be installed indoors or outdoors, above-ground, fully sunken, or partially raised, adapting to virtually any architectural setting. Modular transport makes relocation or expansion possible without loss of value. Optional features such as counter-current jets, underwater treadmills, lighting systems, and camera-based observation expand the therapeutic potential even further. Combined with advanced filtration and disinfection systems, the Modular Pool is not only a clinical investment but also an adaptable infrastructure solution that grows with the needs of patients, therapists, and facilities.



How It Works

Safe, Adaptive, Effective

The Modular Pool transforms water into a safe, controlled environment for rehabilitation. Non-slip flooring and optional handrails provide secure support for users with limited stability, while a movable floor or integrated lift ensures safe entry for wheelchair and stretcher patients. This makes the pool inclusive for all mobility levels and adaptable to a wide range of therapy needs.



Smooth stainless steel surfaces resist staining and bacterial growth, enabling faster, more effective cleaning compared to porous concrete pools. Designed for intensive clinical use, the pool supports safe patient handling and efficient therapist workflows without compromising hygiene or comfort.

The modular design allows efficient assembly, quick commissioning, and straightforward servicing. Components are accessible from the pool surface or exterior, reducing maintenance complexity. Unlike concrete pools, downtime is minimized, as tile replacement, screed drying, and waterproofing repairs are unnecessary. Transportable panels allow installation even in confined spaces, with most pools operational within two weeks. Together, these features deliver a hydrotherapy system that is safe, reliable, and optimized for continuous professional use.



Clinical Application

The effectiveness of aquatic therapy lies in adapting buoyancy, resistance, and support to each patient's stage of recovery. A Modular Pool equipped with a Movable floor achieves this through adjustable depths, which allow precise control over therapeutic intensity. At shallow settings, patients can relearn stepping, gait, and balance with secure footing and partial weight-bearing. At mid-depths, resistance increases to support strength building, endurance, and cardiovascular training while still protecting joints. At maximum depth, patients experience near weightlessness, enabling stretching, relaxation, and safe mobility even for those with significant limitations.

This versatility makes the pool suitable for neurological rehabilitation, orthopedic recovery, pediatric therapy, geriatric programs, and sports performance. For patients, it creates a safe, motivating environment that fosters confidence and independence. For facilities, it enables a single pool to serve a wide range of clinical programs without compromise. Every session becomes an opportunity to match therapeutic goals with the right aquatic conditions, ensuring progress step by step.



Why Choose the Modular Pool?

Operational & Strategic Benefits

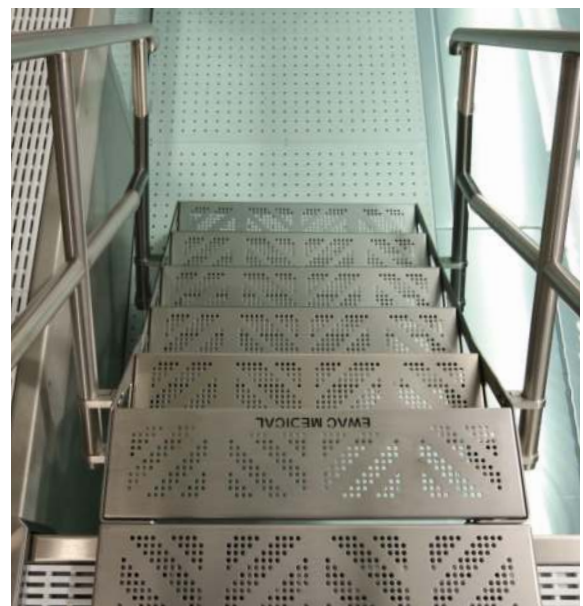
Clinical & Functional Benefits

The EWAC Medical Modular Pool is a Class I medical device built specifically for rehabilitation and therapy. Unlike conventional pools, it is designed for clinical performance, safety, and adaptability. Patients benefit from a setting where confidence, comfort, and dignity are prioritized, while therapists gain a treatment tool that adapts instantly to individual protocols.



Optional features—from movable floors and underwater treadmills to observation cameras and counter-current systems—expand the therapeutic potential. Observation windows and underwater camera systems allow for rigorous assessment and documentation, supporting both clinical practice and scientific research. Adjustable depths mean a single pool can serve multiple therapy types and patient groups, maximizing both utility and clinical outcomes.

For healthcare facilities, the Modular Pool represents a reliable, field-proven investment in patient care, with decades of successful installations worldwide. It provides a hygienic, adaptable environment that ensures every therapy session is conducted at the highest possible standard. This balance of patient benefit and therapist support makes it one of the most versatile rehabilitation tools available today.



Operational & Strategic Benefits

The Modular Pool provides healthcare facilities with long-term operational stability and strategic flexibility. Stainless steel construction guarantees durability unmatched by concrete pools, eliminating risks of cracking, leakage, and costly tile repairs. Smooth, non-porous surfaces simplify daily cleaning, reducing downtime and labor, while certified sealing ensures watertight reliability for decades of use.



Its modular design allows components to be carried through standard doorways and assembled directly inside therapy areas, avoiding major structural work and minimizing installation disruption. Pools can be relocated, resized, or expanded in future, ensuring lasting value even if institutional needs evolve. Installation is typically completed within two weeks, enabling faster commissioning compared to traditional pool construction.

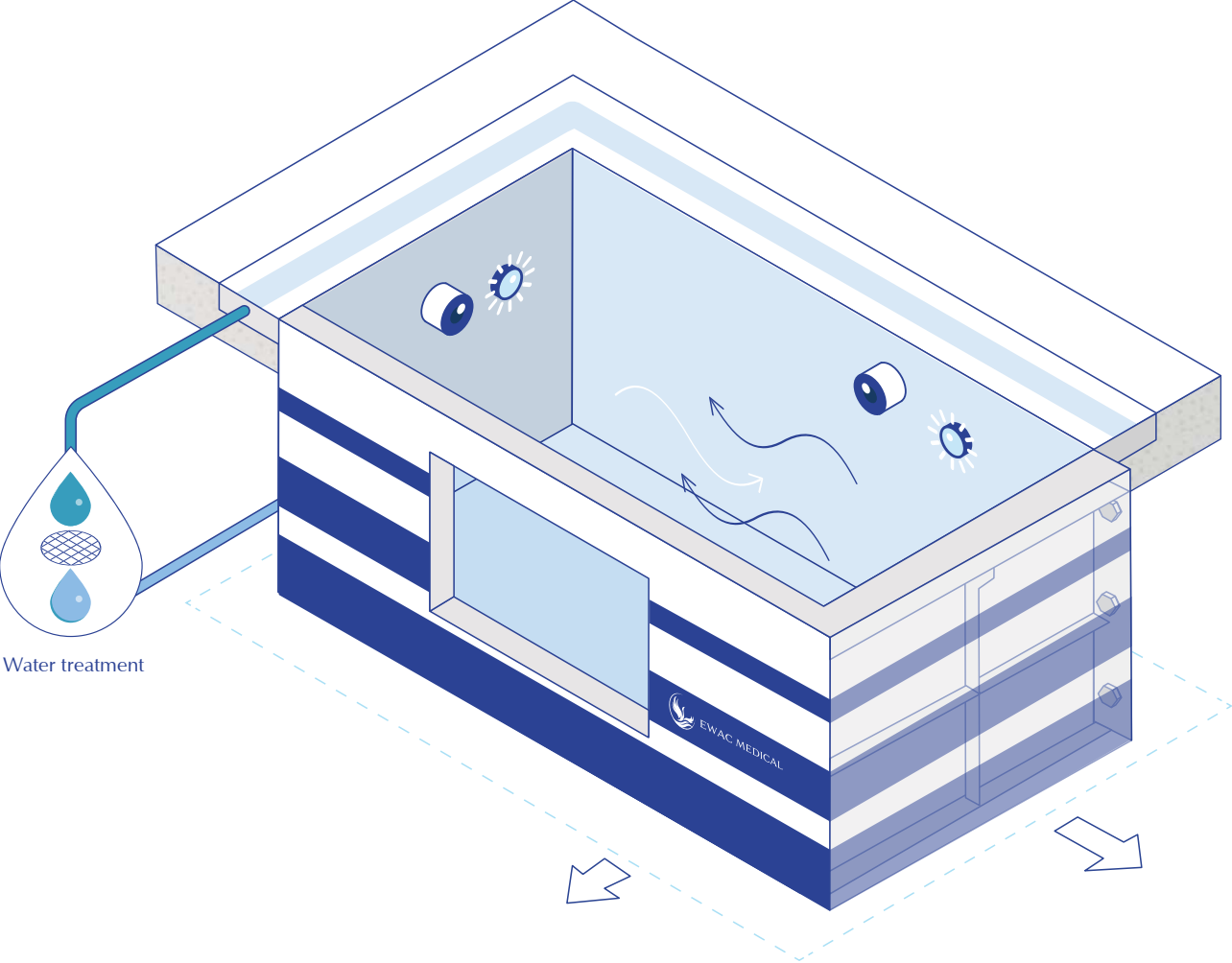
EWAC Medical's track record of more than 1,000 global installations underscores its reliability. With ISO 9001 and ISO 13485 certification, and more than 25 years of experience, EWAC Medical provides not only a product but also a long-term partnership. Investment in the Modular Pool strengthens institutional reputation, attracting patients, supporting therapists, and ensuring sustainable, high-quality service delivery.



Specifications

Size	Modular design, custom dimensions available
Water Depth	Fixed, single or multiple depths, or adjustable (up to 170 cm standard) with a movable swimming pool floor
Structure	Self-supporting AISI 316L stainless steel panels, corrosion-resistant and hygienic
Watertightness	Achieved with certified joint sealing technology
Cladding (free-standing models)	Aluminium/PE side panels for durable finish
Surface	Non-slip flooring, independently certified for slip resistance
Circulation	Skimmer or overflow gutter configuration
Water Treatment	Integrated filtration and disinfection systems
Advanced Observation	Integrated underwater camera systems and observation windows for clinical feedback
Optional Features	Movable floor, underwater treadmill, lighting, counter-current jets, camera systems, and many more features
Installation	Indoor or outdoor; above-ground, sunken, or partially raised/sunken
Installation Time	Average on-site installation of approx. two weeks
Transportability	Modular components can be carried through standard doorways for assembly inside therapy rooms
Project Delivery	Turnkey solution with a single point of responsibility
Classification & Quality	Class I medical device (MDR), manufacturer certified to ISO 9001 and ISO 13485

Infographic



Water treatment

MAXIMUM ADAPTABILITY

-  Movable pool floor
-  Lights
-  Camera's
-  Counter current
-  Pool Lifter
-  Underwater massage
-  Fully modular wall and gutter
All systems are made to order in size and depth

BENEFITS

-  No heavy lifting. Parts carried in by hand, fit through normal door.
-  Bolted construction. No welding on site.
-  Ready for use in 1 week
-  Single point of contact
- 25+** years lifespan

Hydrotherapy

The Safest Way to Train Gait & Balance



Hydrotherapy, or aquatic therapy, is a highly effective and safe method for improving gait and balance, particularly for individuals recovering from injury, surgery, or neurological conditions. The natural buoyancy of water reduces the impact on joints and minimizes the risk of falls, making it an ideal environment for rehabilitation and mobility training. The resistance provided by water also helps strengthen muscles, improve coordination, and enhance overall stability. Whether used for physical therapy, athletic rehabilitation, or fall prevention in older adults, hydrotherapy offers a controlled, supportive setting where progress can be made safely and effectively.



EWAC Medical, The Netherlands, medical@ewac.nl
ISO 9001, ISO 13485



Subject to alterations and errors. No rights may be derived from this brochure



LEADER IN
AQUATIC THERAPY
EQUIPMENT



EWAC MEDICAL

WE GET YOU MOVING

